

APRIL 2008
ILLINOIS VALLEY SUPPLY, LLC



Greetings from the "Valley!"

This year 2008 promises to be an exciting year for all in agriculture. We are looking at prices for the products we grow at figures unimaginable just a year ago. At the same time the prices for the inputs are at all-time highs. The rewards for things done right are at record highs and at the same time mistakes carry high penalties.

We at Illinois Valley have been busy this winter preparing for the 2008 spring season. We are starting into spring later than usual, but **please remember to slow down and think safety first!** It will be a season when everything will be going on at once, therefore straining equipment and people to do their best. With our regular people and several extra, capable people lined-up to help, we plan to meet your needs to the very best of our ability.

Every indication is that the market will continue to be very volatile. That is certainly true of NH₃, phosphate and potash. It continues to be very important to put the crop nutrients on where they are needed to return maximum benefits. Also, at this time it is important to have a plan in place for what hybrids go on what fields, and also have the soybeans matched to soil types that will best utilize that particular seed.

John

TYLERS' SPACE:

April has arrived but it seems to be only on the calendar as the recent weather does not indicate a very spring-like pattern. Almost all of our trade area is wet to very wet which shouldn't be too much of a concern right now as low temperatures make it unsuitable to plant corn yet anyway. Hopefully everything will get straightened out soon. I'm sure planters will be rolling before too long.

I would like to **thank everyone** who either bought new **E-sets** or **Precision meters** or took the time to bring existing **Precision units** in for Kyle to run on the stand. Kyle did an excellent job of getting everything done in a timely manner and also making corrections that will save the grower money and headaches this planting season. **We have purchased the add-on kit for our MeterMax Stand** that will allow us to **run meters from the John Deere Pro Series planters**, so keep that in mind next winter. We will have Precision parts in here if you need something this spring as well as the Precision Seed Lubricant (graphite/talc mix).

As we have talked about previously, soybean seed is extremely tight. If you're thinking of double cropping behind wheat this summer, it is time to have a seed conversation with your salesman. Also, I would recommend that you handle your soybean seed at a minimum this spring and always be as gentle as possible with that seed as some seed coats are thin and cracking could occur when handled inappropriately.

Being as wet as it is and it also being the first week of April, some might feel the need to rush into planting as soon as they can get across the ground. I think it is in the best interest

of everyone if we can wait for ideal soil and weather conditions. We won't start losing any significant bushels due to delayed planting until mid to late May here in central Illinois. With the price of seed, and especially the soybean supply issue, re-plants could be abnormally costly.

STEVE'S SPACE:

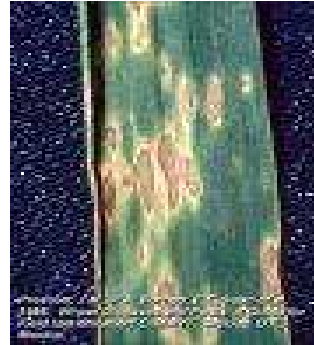
Crop Insurance

April 15, 2008 is the deadline to file your 2007 crop production. If you did not have a loss in 2007 you need to turn in your production. **Important!** Even if the adjuster came to your farm and went through production on every unit the only production that remained in the system were the ones with the loss, all other units without a loss still need turned in ASAP. All customers will get postcards in the mail reminding them of this. If you have turned yours in disregard the postcard. If you haven't turned it in, let's do it now while we are waiting for dry weather.

There have been many questions regarding **Fungicide applications on wheat this year**, here are a few things to remember:

1. Yes, it will pay to apply a fungicide if there is enough disease pressure out there
2. So far the conditions have been favorable for disease
3. The flag leaf contributes up to 80% of the wheat yield, protecting that is crucial
4. Scout often while wheat is growing to monitor spread of disease

5. The cost to treat is around \$25.00/acre applied by airplane
6. Below are some pictures of common diseases:



Leaf Blight



Rust



Tan Spot

We here at the "Valley" hope Spring '08 goes well for each of you and **thanks for your business.**